



Innovating the Art of Listening



Owner's Guide

DOCK-1 for HIFIMAN Portable Players



Customer Service: 201-HIFIMAN (443-4626)

customerservice@hifiman.com

www.hifiman.com

1. Basics

I/O Interface and Buttons	02
Packing List	03
Front Panel and Buttons	04
Rear Panel	05
Remote Control and Buttons	05

2. Operation

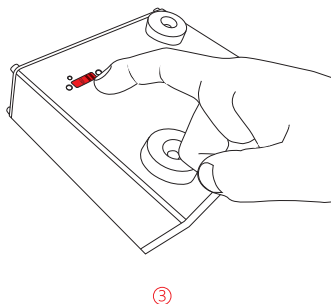
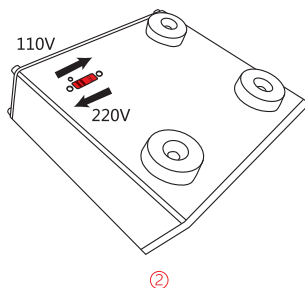
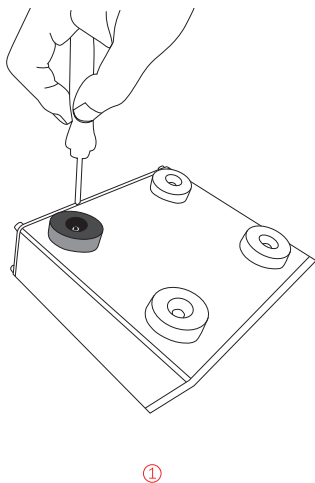
I/O Mode	06
Player Mode	06
Coax Input Mode	06
Optical Input Mode	07
USB DAC Mode	07
Instructions	08
Battery Charger	10

3. Other Information

Notes	11
Appendix	12
Remote Control Battery Replacement	12
Fuse Check and Replacement	13
Product Safety	14
Product Support	14
Disposal and Recycling	15

**Caution :**

Before connecting, please make sure your local power supply voltage matches the voltage of the supporting transformer. If not, please remove the supporting leg on the upper left corner of the bottom panel with a screwdriver. Then switch the selector. (Only for professionals)





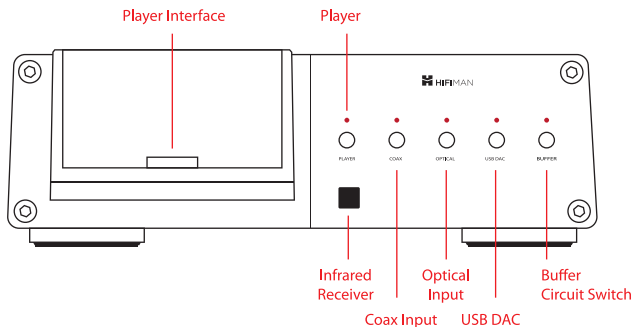
DOCK-1 for HIFIMAN Portable Players

Packing List

Dock x1
Remote Control x1
Power Cable x1
Driver CD x1
Manual x1
USB Cable x1

I/O Interface and Buttons

Front Panel



Buttons Definition

Player: Press to play your player

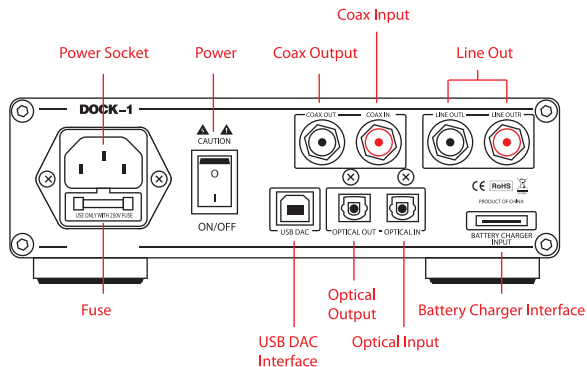
Coax Input: Press to play via coax input

Optical Input: Press to play via optical input

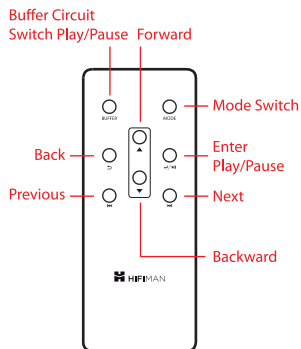
USB DAC: Press to use the USB DAC function

Buffer Circuit Switch: Press to enable/disable the hardware buffer circuit

Rear Panel



Remote Control



Buttons Definition

Buffer Circuit Switch: Press to enable/disable the hardware buffer circuit

Mode Switch: Press to switch between Player/Coax Input/Optical Input/USB DAC

Forward: Press to select the next item in base view or list view

Press to seek 10 seconds forward in player view when playing

Backward: Press to select the previous item in base view or list view

Press to seek 10 seconds backward in player view when playing

Back: Press to go back to the previous view in any view

Previous: Press to play the previous song under player mode

Enter /Play/Pause: Press to enter the selected item in base view or list view

Press to play/pause in the player view

Next: Press to play the next song under player mode

I/O Mode

Input Mode: Player/Coax Input/Optical Input/USB DAC Input

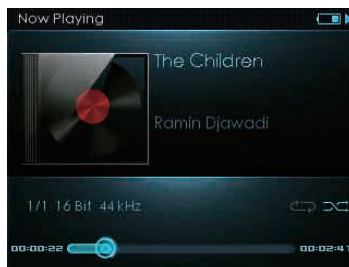
Output Mode: Line Out/Coax Output/Optical Output

Input Mode

1. Player Mode

Press Player button on the front panel or enter this mode by pressing Mode Switch button on the remote control.

In this mode, the player plays as normal. You can play the songs in the player and it can support three output modes: line out, coax output and optical output. The remote control can also enable you to operate the player to Forward/Backward/Back/Previous/Enter/Play/Pause/Next.



2. Coax Input Mode

Press Coax Input button on the front panel or enter this mode by pressing Mode Switch button on the remote control.

In this mode, the player is disabled and it shows coax input in use. The player operation buttons on the remote control are also disabled. You can play songs by connecting to the coax input device. The dock can support line out only.



3. Optical Input Mode

Press Coax Input button on the front panel or enter this mode by pressing Mode Switch button on the remote control.

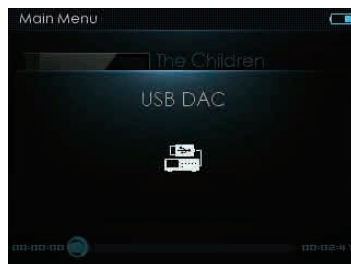
In this mode, the player is disabled and it shows optical input in use. The player operation buttons on the remote control are also disabled. You can play songs by connecting to optical input device. The dock can support line out only.



4. USB DAC Mode

Press USB DAC button on the front panel or enter this mode by pressing Mode Switch button on the remote control.

In this mode, the player is disabled and it shows USB DAC in use. The player operation buttons on the remote control are also disabled. You can play songs on your PC. A driver is needed. It is accessible in the supplied CD or can be downloaded on our website: hifman.com. The dock can support line out only.

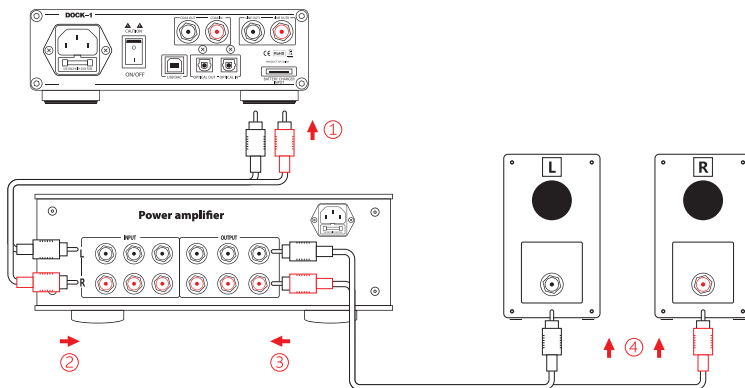


The coax output and optical output can be accessible only in Player mode.

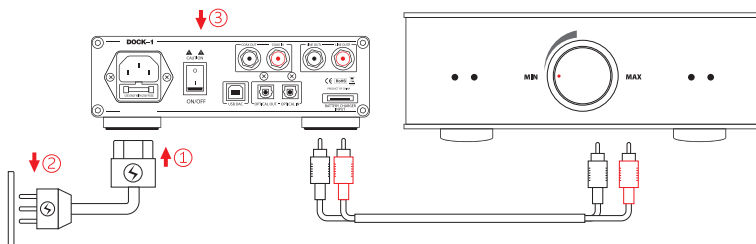
Input \ Output	Line Out	Coax Output	Optical Output
Player	✓	✓	✓
Coax Input	✓	✗	✗
Optical Input	✓	✗	✗
USB DAC	✓	✗	✗

Instructions

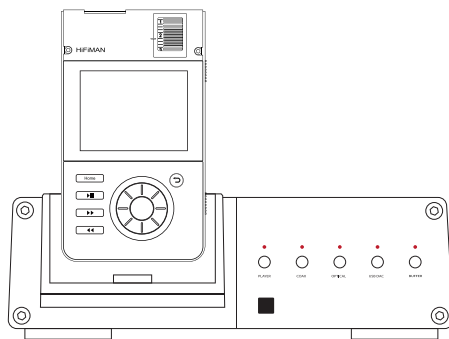
1. Connect the dock to your input/output devices.



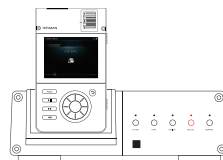
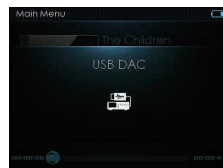
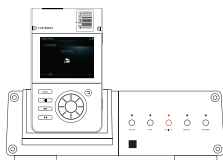
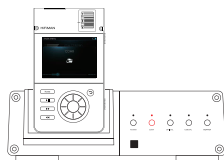
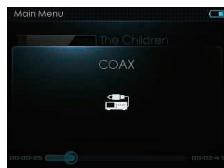
2. Connect the power cable to the dock and power it on.



3. Power on the player and insert it in the dock after the main menu shows.



4. You can change the working mode of the dock as needed by pressing the buttons on the dock or the remote control.



Battery Charger

When the battery charger is connected to the dock, the player can be charged.

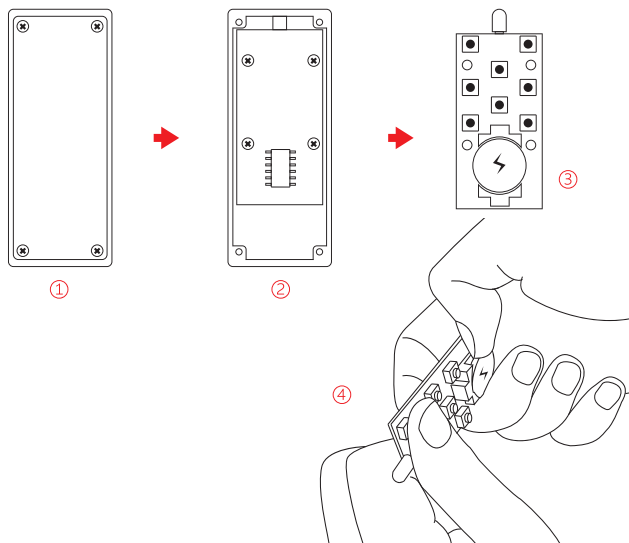
Notes

1. Updated firmware is required to use the Dock. If your player is the old version (for HM901, V1.084 and for HM802, V1.002), please visit hifiman.com to update your firmware to the latest version. In the future, for new players which use 24-pin socket, we will include the dock supporting function in its original firmware. Currently it is available with the following models: HM650, HM802U, HM802s, HM901U and HM901s. You can get the new update from our website or contact customer service directly.
2. The dock itself cannot charge the player. For long-term use, please connect the battery charger to the dock via the interface on the rear panel for charging. (The player comes with the charger; you can also buy it from our dealer or <http://store.hifiman.com/>)
3. When the player is inserted on the dock and the battery charger is connected, the player can be fully charged if it is powered off; it is normal that the player can only be charged to 60% if it is powered on.
4. If there is no response to the operation of the remote control, please check if any obstructions are near the infrared receiving window on the dock. If not, please replace the battery of the remote control. See the Appendix for replacement instructions.
5. If the dock can't start normally after connecting to the power, the fuse might be melted caused by current overload. Please check the status of the fuse. If it is melted, you need to replace it. See the Appendix for fuse check and replacement instructions.

Appendix

Remote Control Battery Replacement :

1. Unscrew the four screws mounted on the back cover of the remote control first and then remove the back cover;
2. Unscrew the four screws fixing the circuit board and remove the circuit board;
3. Replace the battery on the back cover of the circuit board. The model of the battery is CR2032 3V lithium-ion button battery;
4. Fix the circuit board and the four screws. Then install the back cover and the other four screws.



Fuse Check and Replacement :

1. Connect the dock to the power. After it is powered on, it indicates the dock cannot be started if the indicator light on the front panel is not lightened;
2. Unplug the power cable from the socket on the dock and you can see the fuse marked with "USE ONLY WITH 250V FUSE";
3. Use a small slotted screwdriver to remove the fuse under the power socket and check if the fuse is burnt. In this situation, you need replace the fuse of the same model;
4. The fuse is ceramic tube fuse (time-lag) of the specifications: 0.125A/250V, 5*20 mm.

Product Safety

1. Make sure not to place heavy items on the dock to avoid possible damage.
2. Be careful not to drop or hit the dock.
3. Keep the dock away from rain, water, drinks, chemicals and cosmetics, etc. Any damage caused by the dock becoming wet will not be covered under warranty, even if it is within the warranty period.
4. Do not use any chemicals or detergents to clean the dock.
5. Avoid placing the dock in a humid, dusty or smoky environment.
6. Keep the dock from direct sunlight. Proper operating environment: 21.2 °F~104 °F (-6 °C~40 °C).
7. Any attempt to remove, repair or modify the dock without permission is forbidden and will void the warranty.
8. If ear discomfort occurs, lower the volume or discontinue use until a medical professional has examined your ears.

Product Support

Please visit: www.hifiman.com

For any further information or questions, please contact your authorized HIFIMAN dealer. Or email us directly at customerservice@HIFIMAN.com.



facebook.com/hifimanelectronics



twitter.com/hifimanofficial

Thank you for your purchase of a HIFIMAN product.

Disposal and Recycling Information

European Union—Disposal information:



EU ONLY

This symbol means that according to local laws and regulations your product should be disposed of separately from household waste. When this product reaches its end of life, take it to a collection point designated by local authorities. Consumers can be punished by penalty for inappropriate disposal of electronic device. The separate collection and recycling of your product at the time of disposal will help conserve natural resources and ensure that it is recycled in a manner that protects human health and the environment.