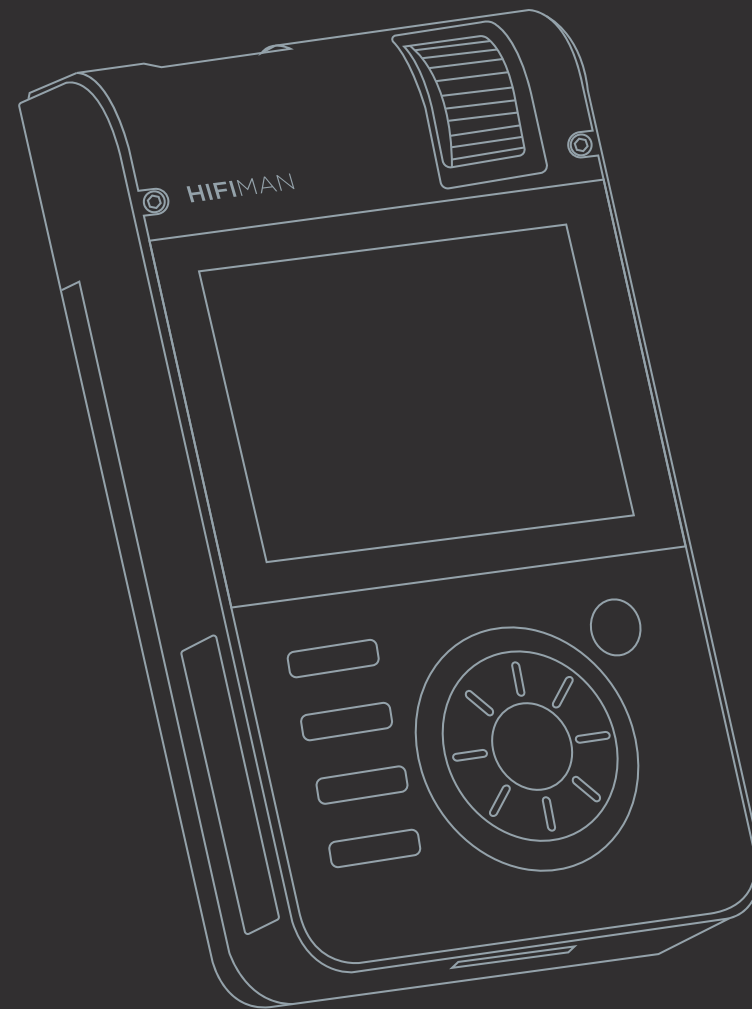




Phone: 1-201-HIFIMAN (443-4626)
Email: customerservice@hifiman.com
Web: www.hifiman.com



HM802s Owner's Guide

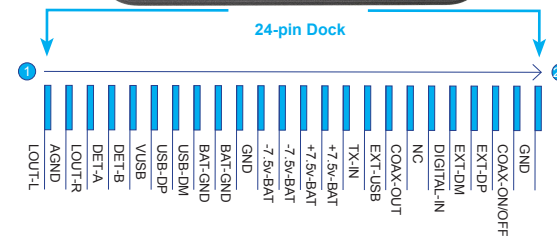
High-Resolution Portable Music Player

1 HM802s Basics	01	2 Operation	08
Function Buttons	02	Main Menu	08
Power key	03	SD Card	08
Accessories	03	Artist, Album and Genre	09
Using HM802s	04	All Songs	09
Note	04	Favorite	09
Card Installation	04	Delete a File	10
To Remove SD Card	04	Play Menu	10
Power ON/OFF/Stand by	04	Setting	10
Reset	05	System Version	11
Charging	05	Repeat	11
Replacing the Battery	05	Shuffle	11
Replacing Amplifier Module	06	Backlight	11
Connections	07	Resume Playback	12
Connecting HM802s to PC	07	Stand by Mode	12
Disconnecting HM802s from PC	07	Auto Power Off	12
		Brightness	13
		CUE Support	13
		Language	13
		Gain	13
3 Other information	16	S/P DIF	14
HM802s Service and Support	16	Updating Media Database	15
Recycling Information	17	Reset Settings	15

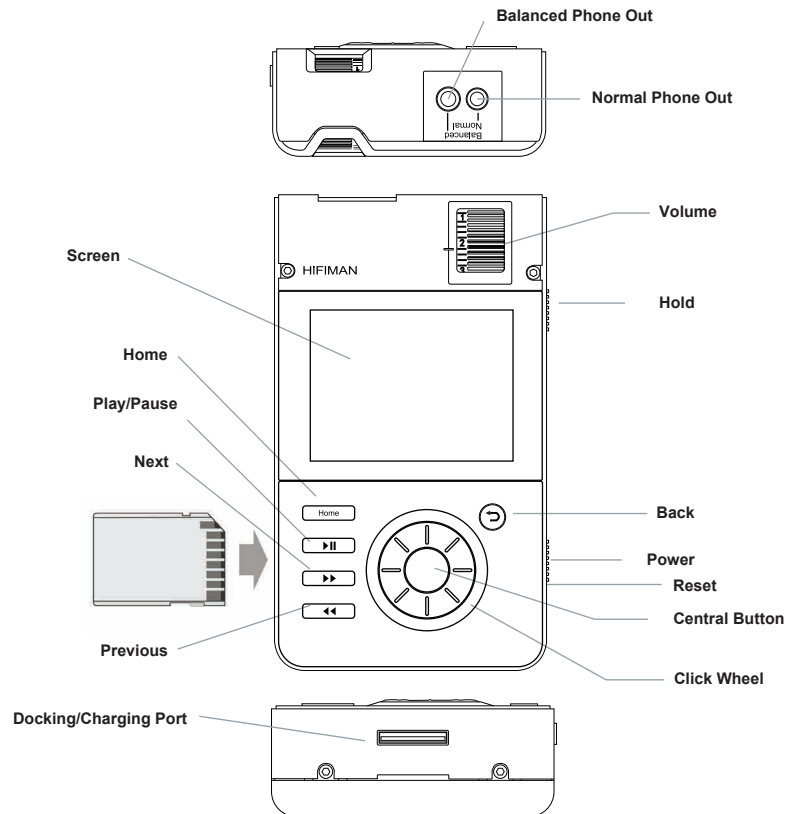


Specifications:

- Dimensions:** 72mm W* 117mm H* 27mm D
- Weight:** 300g (with battery and amp card)
- Battery Life:** 11 hours
- D/A Chip:** WM8740*2
- Frequency Response:** 20HZ-20KHz
- Distortion:** 0.008% (Line out)
- S/N:** 106±4dB
- SD Card Memory:** Up to 256G
- Supported Music Formats:**
16/24Bit: WAV, FLAC, APE, AIFF (44.1KHz-192KHz)
MP3, WMA, ALAC, AAC, OGG
DSD64 (DFF, DSF)



Function Buttons



Power Key

Hold the power key up for 2-3 sec to turn on the player when HM802s is powered off.

Click Wheel

The icon will show on the main menu after the player is powered on.

Central Button Press the central button in play menu to play music or pause.

Back Press the button to return to the previous folder.

HOME In Play menu, press the HOME button to go to the main menu; press HOME again to return to play menu.

Play/Pause After pressing the Play/Pause button, the player will play music or pause from anywhere.

NEXT Press the button to go to next song from anywhere.

PREVIOUS Press the button to return to previous song from anywhere.

Volume Please turn the volume to "0" before playing music to protect your hearing. After the player is powered on, adjust the volume as you like.

HOLD Press the HOLD button to lock or unlock the player. When the switch is set to hold, all the buttons (except for volume button) are disabled. When the player is unlocked, all the buttons will once again be working.

Accessories

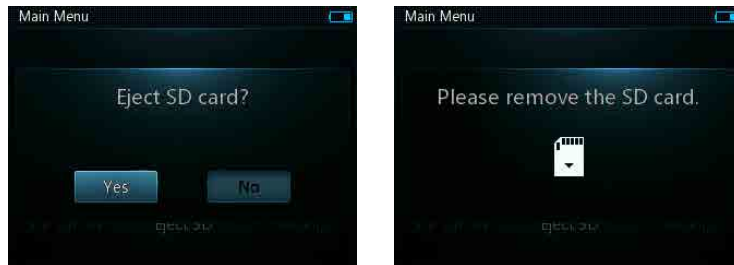
1. Amplifier module
2. RCA cable: for line out (red and white), for S/P DIF IN (black)
3. Charger, for charging HM802s
4. Battery: Li-ion +7.4V 1600 mAh, -7.4V 500mAh
5. Owner's Guide

Using HM802s

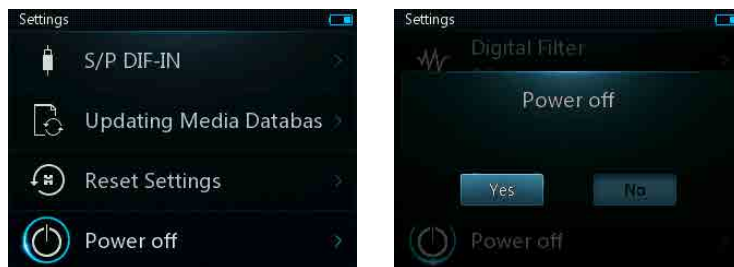
Note Please read this manual thoroughly on how to best install and operate your player for many years of enjoyment.

Card Installation The HM802s will automatically detect and update the files in the SD card after the player is turned on. The time for detection depends on the size of the files on the SD card. After the update, the HM802s will be ready to play.

To Remove SD Card Choose "Remove SD Card" from the Main Menu. Wait until you see "Please remove the SD card". The SD card is then safe to be removed.



Power ON/OFF/Stand by Hold the power key on the right side of HM802s up for 3 sec. After releasing the power key, the player will power on and the HIFIMAN logo will appear. Push the power key up when the player is powered on, it will enter Stand by mode. Under Stand by mode, push the power key up for 3 sec, the player will be on. Go to Setting and select Power OFF to power the player off when the player is powered on.



Note: Even under Stand by mode, the player still consumes electricity. Using a fully-charged battery can last seven to eight days if the player is in Stand by mode. If you will not listen to the player for a long period of time, please power it off.

Reset

Should the player LCD become "frozen", carefully insert a fine-point pen or needle in the reset hole to reboot the player.

Charging

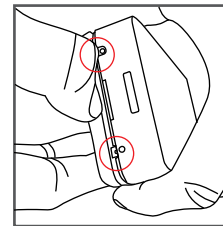
The average battery life of HM802s is nine hours. Please charge the player when you see a reminder of low power. We recommend that you use the original HIFIMAN charger.

Note: 1. The player can only be charged fully with Power OFF or under Stand by mode.
2. It cannot be charged via a USB port.

Replacing the Battery

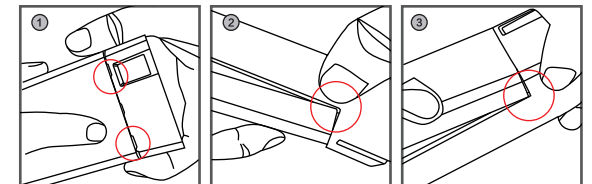
How to remove the back cover of HM802s:

1. Remove the screws on the bottom (shown in red circles).
2. Gently lift the back cover.

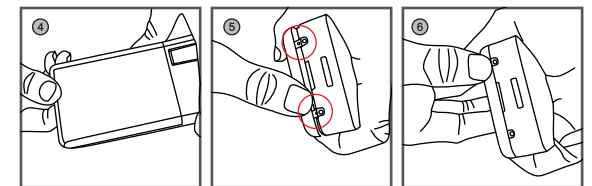


How to replace the cover back:

1. Insert the back cover to fit in the two latch holes on the top. (Pictures 1).
2. Make sure the back cover falls into place along the frame. Fit in the two latch holes on the bottom (Pictures 2 and 3).



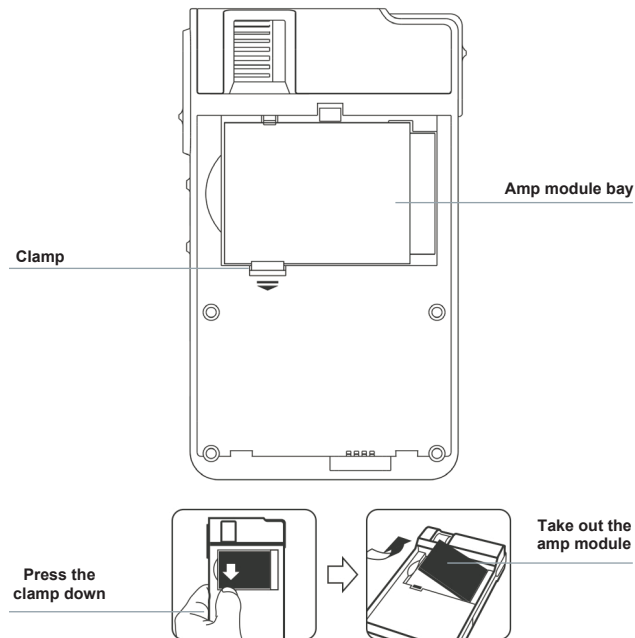
1. Slightly press the back cover down. Check if it is securely in place without any slant (Pictures 4 and 5).
2. Replace the two screws on the bottom (Picture 6).



When your battery is out of life, you should replace it with a new one which can only be supplied by HIFIMAN or HIFIMAN authorized dealers. For more information on replacing the battery, please visit: <http://head-direct.com/>

Replacing Amplifier Module

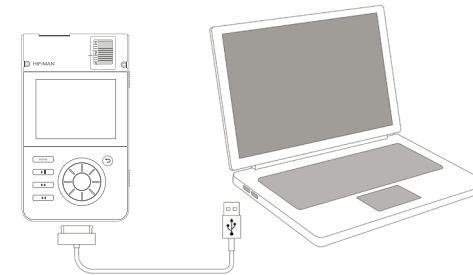
Please remove the battery first as instructed above. Then the amp module can be replaced. Several optional amplifier cards are available for your HM802s to meet different needs. Below is a figure on how to replace the amp module:



Please install the amp module in the opposite way of removing it.

Connecting

Connecting HM802s to PC



1. Use the USB cable to connect HM802s to the computer.
2. Wait for the system to show "USB connecting".
3. Copy the file or folder to SD card.

Note:

1. It is important not to remove the USB cable while music is being downloaded as the music files could be corrupted.
2. The speed for data transfer will vary depending on the size of the transferred files and/or the operating system of your computer.

Disconnecting HM802s from PC

Click the USB device icon on the computer and disconnect the player. The USB cable can then be removed.

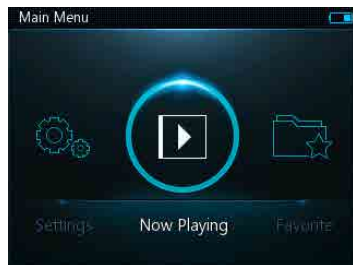
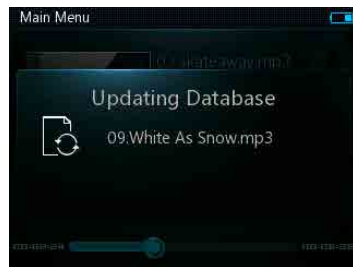
Note:

1. The USB device icon might be concealed under other programs. If you cannot see it, click the "show the concealed device" and you will find the USB device icon.
2. When the SD card is in operation, you should not disconnect the player.
3. It is important not to remove the USB cable while the music is being downloaded. Or you might damage the music files.

2 Operation

Main Menu

When the player is being started, the system will automatically detect the music files on the SD card and update the database. After the update, the HM802s will go to main menu.



SD Card

On the main menu, rotate the wheel to enter the SD card menu and view the music files. When the wheel highlights a single track, press the central button to play the song. By default, non-music files will not be visible.



Artist Album and Genre

After the player is started, the music files on the SD card are classified according to the artist, album and genre. Accordingly, three menus are shown on the main menu.

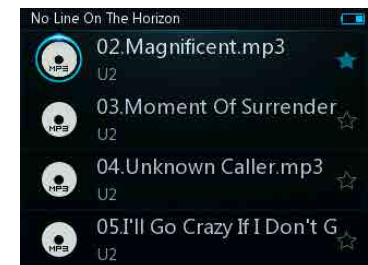
All Songs

After the player is started, you can go to "browse all songs" from the main menu and play music.



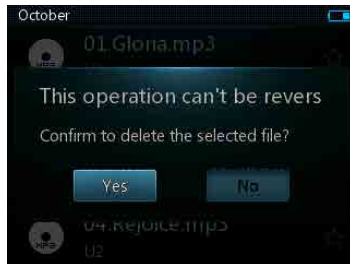
Favorite

When you browse all songs, you will see a star following each song on the right. If you press the central button for several seconds, the song you are browsing will be added to "Favorite" with the star being solid. By entering Favorite from the main menu, you will see all the added songs.



Delete a File

On the song list, press the Back button for seconds and a window will show up. Press Yes to delete the file you select. Note: the song being played cannot be deleted.



Play Menu

Below is the play menu. You can press Central Button to pause/play music.



In play menu, press the Central button for secs will enable the play setting window. Users can change the Repeat/Shuffle, Low/High Gain, and Favorite. Users can add or delete the playing song from Favorite.



Setting



System Version

Click to see the information on your HM802s' current software version.



Repeat

On Main Menu, select "Setting" then go to "Repeat" to make your selection.



Shuffle

On Main Menu, select "Setting" then go to "Shuffle" to make your selection.



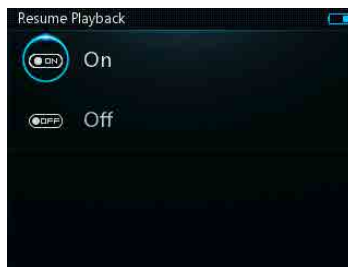
Backlight

You have the option to set the time for the player backlight as "always on, 10s, 30s, 1min and 2 mins".



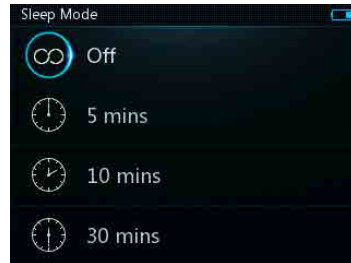
Resume Playback

On Main Menu, select "Setting" then go to "Resume Playback" to turn on of turn off this function.



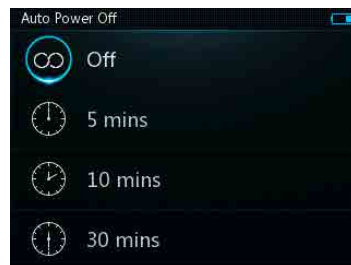
Stand by Mode

On Main Menu, select "Setting" then go to "Stand by Mode" to set up the Stand by function and desired amount of time. The player will Stand by at the pre-set time calculated by when the player was operated for the last time.



Auto Power Off

On Main Menu, select "Setting" then go to "Auto Power Off". The player will be powered off at the pre-set time calculated by when the player (non-playing status) was operated for the last time.



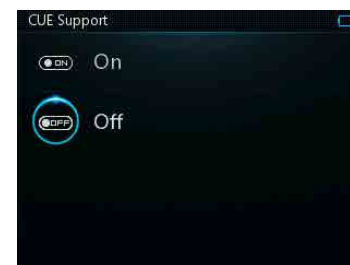
Brightness

Set the display brightness from 1 to 5. * The brighter it is, more power will be consumed.



CUE Support

On main menu, please go to Settings and then select CUE Support to turn on/off this function.



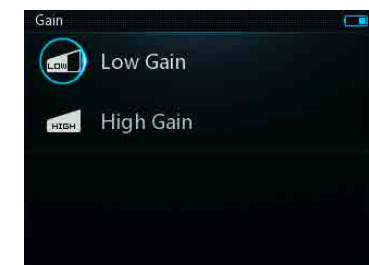
Language

On Main Menu, select "Setting" then go to "Language" to make your selection.



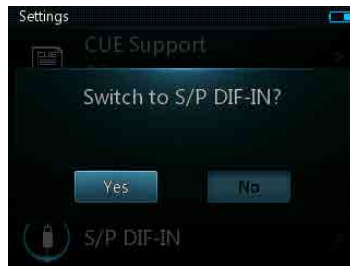
Gain

On Main Menu, select "Setting" then go to "Gain" to make your selection.



S/P DIF

Switch between DAP and S/P DIF.



In S/P DIF menu, press the central button to select the input sampling frequency.



In S/P DIF menu, press the Back button to exit S/P DIF.



Note:1.It is not necessary to select the sampling before playing as some frequency lower than 96KHz can be played while you select “ \geq 96KHz” or the other way around. Only when you find that songs cannot be played properly, should you switch the sampling.

2.Before you select the sampling, please pause the source to switch and then resume. It is not recommended to select the sampling in playing. This may cause silence.

Updating Media Database

Refresh the files on the SD card and update the index information for all files in the data base.



Reset Settings

Perform Factory Data Reset.



Warning: Performing a Factory Data Reset will clear the player's memory and put it back to the original factory default state.

3 Other information

Product Safety

Note:

Make sure not to place heavy items on HM802s to avoid possible damage to the player.

Be careful not to drop or hit your player.

Keep the player away from rain, water, drinks, chemicals and cosmetics, etc.

Any damage caused by the player being soaked will not be covered in the warranty whether it is within or without the warranty period.

Avoid putting the player in a humid, dusty or smoky environment.

Any attempt to remove, repair or modify the player without permission is forbidden and will void the warranty.

Keep the player from direct sunlight. Proper operating environment: 21.2°F~104°F(-6°C~40°C).

Do not use any chemicals or detergents to clean the player.

Do not disconnect the player with PC when the downloading do not complete.

Do not plug any other device into the headphone output port except for headphones.

It is recommended not to use headphones while riding, driving or operating motor vehicles.

If you experience ringing in your ears, please reduce the volume or turn off your player.

HM802s Service and Support

Should it become necessary to return your product to HIFIMAN for warranty or post-warranty service, please contact our customer service team to obtain an RA#. Return shipping to HIFIMAN or an authorized service facility is at the responsibility of the owner.

Disposal and Recycling Information

HM802s Disposal and Recycling:

Dispose of your HM802s according to your local environmental laws and regulations. The disposal of your HM802s should be separated from household waste because the player contains electronic parts and battery.

When your HM802s reaches its end of life, please contact your local environmental department for disposal and recycling information or you could simply send it back to us. The battery will be removed and properly recycled.

European Union—Disposal information:



This symbol means that according to local laws and regulations your product should be disposed of separately from household waste. When this product reaches its end of life, take it to a collection point designated by local authorities. Consumers can be punished by penalty for inappropriate disposal of electronic device. The separate collection and recycling of your product at the time of disposal will help conserve natural resources and ensure that it is recycled in a manner that protects human health and the environment.